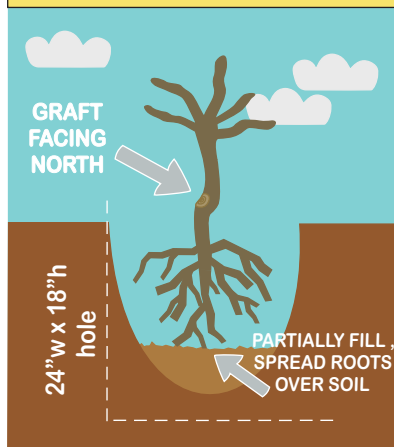
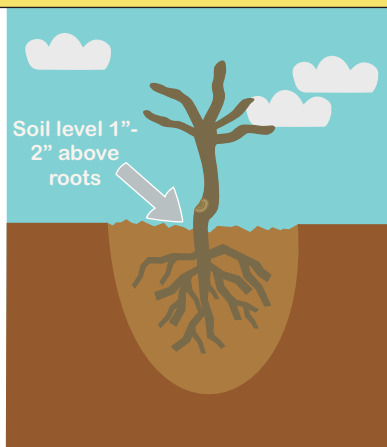


# BARE ROOT FRUIT TREE PLANTING GUIDE

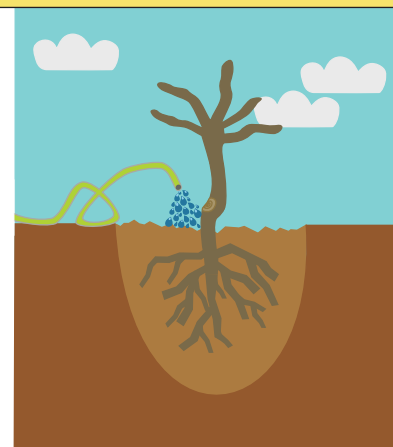
## DAY 1:



- Dig an approximately 24" w x 18" h hole
- Partially fill the hole with your soil mixture.
- Spread the roots of your fruit tree out over the soil.
- Face the graft of your tree north to avoid sun damage



- Fill the rest of the hole with your soil mixture.
- The soil level should be 1"-2" about highest roots



- Pack the soil, making sure there are no air pockets around your roots
- Thoroughly water your new fruit tree

*When mixing your soil, we recommend to use 50/50 mixture that includes native soil and an amendment bag of soil.*

*native soil + amendment bag of soil + FUN = SUCCESS!*

## CONTINUED DORMANT CARE:



- Do not over water your new fruit tree! Make sure to only water it when the soil is dry.
- The branches want to cool down too! Until your tree produces leaves, give the branches a little water

## PRODUCTS WE RECOMMEND FOR HAPPY TREES:

<b>Soils</b>	Master Nursery Gold Rush Master Nursery Planting Mix
<b>Fertilizer</b>	Organic Bumper Crop Citrus & Fruit Tree Food Master Nursery Master Start
<b>FUN Extras!</b>	<b>Mykos</b> - natural fungus that acts like a sponge for your tree's roots to help collect nutrients and moisture. Use this to help stimulate extensive root growth and reduce transplant shock. <b>Master Nursery Root Master B1</b> - a supplement that is also a transplant shock preventative and new root stimulant.

